

ASD Access Pathway - Phase 1



GOAL: To provide Intake workers with an easy way to determine the most appropriate and efficient access point for callers enquiring about ASD services and supports.

Intake at any York Region agency will:

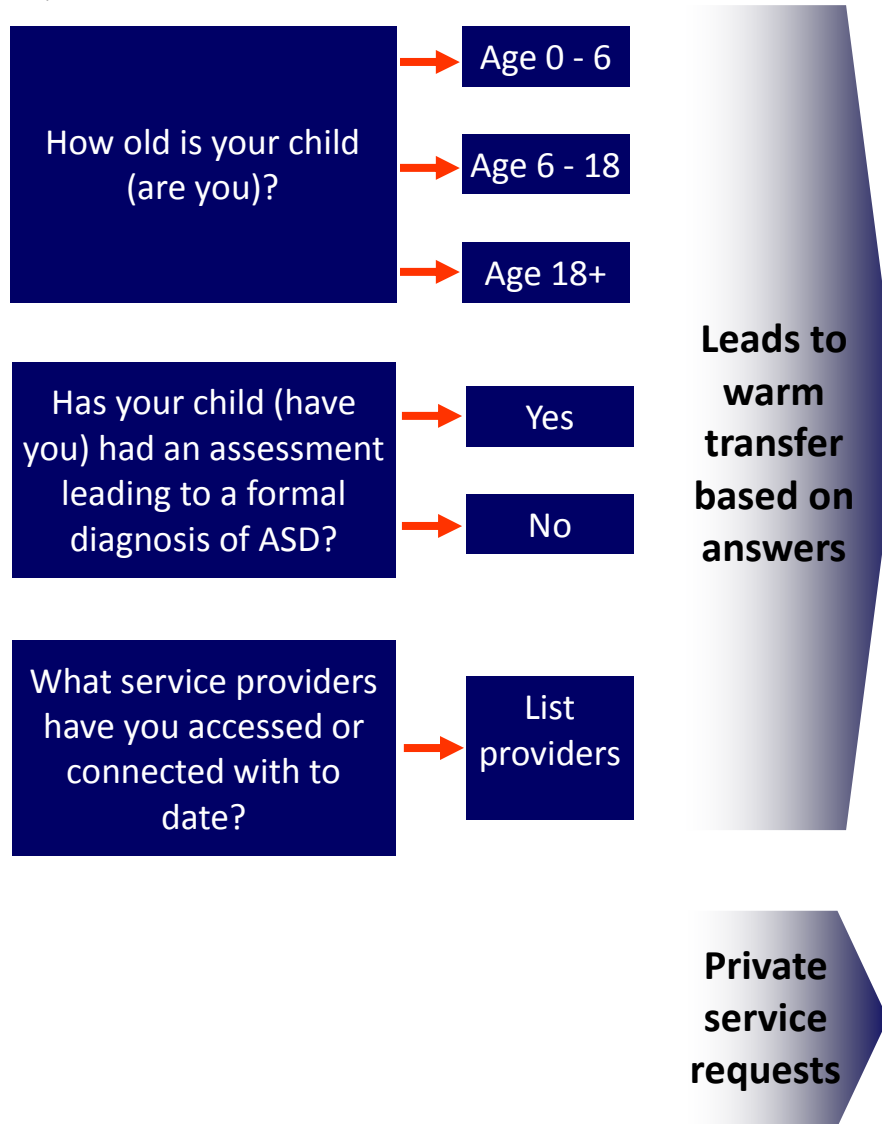
1. Have Knowledge...

- ...of ASD and ASD related support needs.
- ...of core getting started services.
- ...of correct pathways to service.
- ...of answers to the top 10 questions parents ask.

2. Document:

Using a common intake form (to be designed) on an electronic record shared by all partners. Intake workers will document relevant demographic information and the answers to the questions below.

3. Determine Direction Through the Following Questions:



Age	Stage	NEEDS							
		Service Connection	Education	Parent Education/ Family Support	Respite	Government Funding	Recreation	Additional Needs (Health or Mental Health)	Transition Planning
0-6 years	Not yet diagnosed	- EIS and referral out - Assess needs	School facilitates referrals as needed	EIS					
	Diagnosed	- EIS and referral out - assess needs	School	EIS and referral out	EIS and referral out	EIS and referral out	EIS and referral out	EIS and referral out	EIS and referral out
6-18 years	Not yet diagnosed	- CTN - assess needs	School facilitates referrals as needed						
	Diagnosed	- KPAS and referral out - assess needs	School	KPAS	KPAS	KPAS and referral out	KPAS and referral out	KPAS and referral out	KPAS and referral out
18+ years	Not yet diagnosed	DSO/CER - assess needs - Referral out	<21 - school facilitates referrals as needed						
	Diagnosed	DSO CER - assess needs - referral out	<21 - school	DSO CER referral out	DSO CER referral out	DSO CER referral out	DSO CER referral out	DSO CER referral out	DSO CER referral out
Any age	Not yet diagnosed	DSO eligible	211	<21 - school	DSO CER referral out	DSO CER referral out	DSO CER referral out	DSO CER referral out	DSO CER referral out
		DSO ineligible	211	<21 - school					